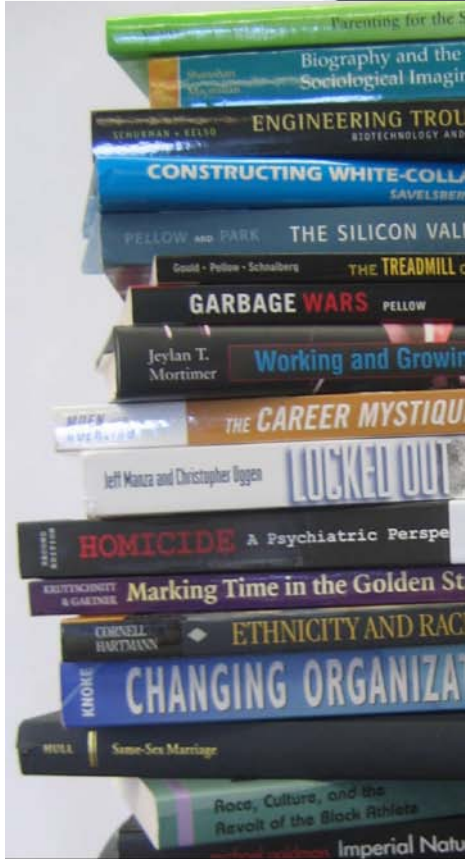


department of
SOCIOLOGY



Faculty Research Activities 2010-11

Contents

| | |
|-------------------------------|----|
| Message from the Chair | 3 |
| Cawo Abdi..... | 4 |
| Ronald R. Aminzade | 5 |
| Yanjie Bian..... | 6 |
| Elizabeth Heger Boyle..... | 7 |
| Jeffrey P. Broadbent | 8 |
| Penny Edgell..... | 9 |
| Gabrielle Ferrales..... | 10 |
| Joseph Gerteis..... | 11 |
| Michael Goldman | 12 |
| Teresa Gowan..... | 13 |
| Eric Grodsky..... | 14 |
| Douglas Hartmann | 15 |
| Kathy Hull..... | 16 |
| Erin Kelly | 17 |
| David Knoke..... | 18 |
| Carolyn Liebler | 19 |
| Enid Lynette Logan | 20 |
| Ross Macmillan..... | 21 |
| Carl P. Malmquist..... | 2 |
| Ann Meier..... | 23 |
| Phyllis Moen..... | 24 |
| Jeylan T. Mortimer | 25 |
| Joshua Page | 26 |
| Lisa Park | 27 |
| David Pellow | 28 |
| Joel Samaha | 29 |
| Joachim J. Savelsberg..... | 30 |
| Rachel Schurman..... | 31 |
| Teresa Toguchi Swartz | 32 |
| Chris Uggen | 33 |
| John Robert “Rob” Warren..... | 34 |



Message from the Chair

Sociology faculty and students are exceptionally active in research, creating and disseminating the work that shapes our field. After five years as chair, I still marvel at the creativity, range, and impact of this scholarship and see how it enlivens every aspect of our mission. We've gone from bidding for major journals to actually publishing them from Minnesota, building contexts.org into one of the top sociology destinations on the web. We've gone from committing to principles of excellence and diversity to actively recruiting the very best and most diverse faculty and students in our 108-year history. We've gone from talking about self-examination to conducting a successful self-study and external review. And, through the generous support of a remarkable donor, we've established the department's very first endowed chair.

But this is no time for hubris or complacency. While Minnesota sociology is clearly moving from good to great, we have not yet attained the critical mass that will sustain our excellence over the next decade, much less the next century. Moreover, the recent recession and state budget crunch is forcing hard choices upon universities and funders, as well as our communities, students, and their families. Yet these economic challenges also imbue our research activities with even greater meaning and purpose -- we aren't just pushing paper these days -- and the stakes are high for sociology and for our department.

And while we are accomplishing much collectively, we remain a community of amazing individual scholars. Beyond the big books, important articles, and major grants listed here, we also hope to convey our passion and high intellectual standards. The breadth and vitality of our research is enacted each Tuesday in our lively department workshop and celebrated each spring in our Sociological Research Institute. This year, we're delighted to welcome another terrific scholar as a tenure-track faculty member, Assistant Professor Carolyn Liebler, who will make bold contributions to demography and build the department's historic strengths in family and life course research. Our graduate program is also flourishing, with students garnering prestigious awards and fellowships to support their research and job placements in top sociology departments throughout the world.

In short, I share the conclusions of the external review committee that recently evaluated our department: Minnesota has become a "top-tier department with a fine record of research productivity, a vibrant intellectual community, and an impressive record of service ... well-positioned to become one of the leading departments in the nation." We are also a community of scholars endeavoring to conduct research that matters. We are engaged in teaching at a great public university, engaged in the communities around us, and, first and foremost, engaged in conducting first-rate sociological research.

Chris Uggen

A handwritten signature in dark ink that reads "Chris Uggen".

Professor and Chair

Cawo Abdi
Assistant Professor
Ph.D. 2006 University of Sussex
Room 1146 Social Sciences
(612) 624-3714
cabdi@umn.edu



INTEREST AREAS:

Migration; Gender, Race and Class; Islam; Family; Human Rights; Development Studies; Globalization; Africa; Middle East.

CURRENT RESEARCH:

Book Manuscript: "Divergent Migrations: Somali Experiences in South Africa, America and the United Arab Emirates."

"Moving Beyond 'Xenophobia': Structural Poverty, Conflict and Encounters with the 'Other' Africans."

"Negotiating Marital Arrangements in the Era of HIV/AIDs: A Case Study of the Chaga Communities of Kilimanjaro, Tanzania." (With June Msechu).

SELECTED PUBLICATIONS:

"Threatened Identities and Gendered Opportunities: Somali Migration to America." *Signs: Journal of Women in Culture and Society*. (Forthcoming)

Book Review "For Better, For Worse: The Marriage Crisis that Made Modern Egypt" by Hanan Kholoussy. 2010. *American Journal of Sociology*, 116(3): 999-1001.

"Contested Norms and Values in Transnational Families." 2008. Pp. 164-167 in *Global Families*, edited by M. W. Karraker. Boston, MA: Pearson, Allyn and Bacon.

"Convergence of Civil War and the Religious Right: Re-Imagining Somali Women." 2007. *Signs: Journal of Women in Culture and Society* 33(1):183-207.

"The New Age of Security: Implications for Refugees and Internally Displaced Persons in the Horn of Africa." 2007. *Development* 50(4):75-81.

"Refugees, Gender-based Violence and Resistance: A Case Study of Somali Women in Kenyan Camps." 2006. Pp. 231-251 in *Gender Migration and Citizenship: Making Local, National and Transnational Connections*, edited by E. Tastsoglou and A. Dobrowolsky. London: Ashgate Publishing Limited.

Ronald R. Aminzade

Professor
Ph.D. 1978 University of Michigan
Room 1031 Social Sciences
(612) 624-9570
aminzade@umn.edu



INTEREST AREAS:

Historical and Comparative; Political Sociology; Sociology of Development; Nationalism; Race Relations; Social Movements; Democratic Theory; Sociology of Higher Education.

CURRENT RESEARCH:

"Nationalism and the Politics of Exclusion: An Historical Sociology of Tanzanian Nationalism," a book manuscript exploring how processes of exclusion with respect to internal and external others (i.e. racial minorities and non-citizens) have shaped nationalism and the nation-building project during the colonial, state socialist, and neo-liberal eras.

SELECTED PUBLICATIONS:

"Neoliberal Capitalism and the Death of Politics in Africa." 2009. Symposium on African Politics. Newsletter of the Political Sociology Section of the American Sociological Association. Spring: 1, 3, 4.

"Nation Building in Post-Colonial Nation-States: The Cases of Tanzania and Fiji," with Erik Larson. 2009. *International Social Science Journal* 192:169-182.

"Historians and the Study of Social Protest," with Brian Dill. 2007. Pp. 267-311 in *Handbook of Social Movements Across the Disciplines*, edited by C. Roggeband and B. Klandermans. New York: Springer Publishers.

"Nation-States Confront the Global: Discourses of Indigenous Rights in Fiji and Tanzania," with Erik Larson. 2007. *Sociological Quarterly* 48(4):801-831.

"From Race to Citizenship: The Indigenization Debate in Post-Socialist Tanzania." 2003. *Studies in Comparative International Development* 38(1): 43-63.

"The Politics of Race and Nation: Citizenship and Africanization in Tanganyika." 2001. Pp. 53-90 in *Political Power and Social Theory*, Vol. 14, edited by D. E. Davis. Amsterdam: Elsevier Science.

Yanjie Bian

Professor

Ph.D. 1990 State University of New York, Albany
Room 967 Social Sciences
(612) 624-9554
bianx001@umn.edu



INTEREST AREAS:

Structural Sociology; Social Stratification and Mobility; Economic Sociology; Social Networks; Contemporary Chinese Societies in East Asia.

CURRENT RESEARCH:

Social capital of Chinese firms; Social networks and employment processes in Chinese society; Institutional change and social stratification and mobility in post-Mao China.

SELECTED PUBLICATIONS:

"Nepotism and *Guanxi*." 2009. Pp. 26-28 in *Encyclopedia of Modern China*, Vol. 3, edited by D. Pong. Detroit, MI: Charles Scribner's Sons.

"Sociology." 2009. Pp. 2031-2035 in *The Berkshire Encyclopedia of China*, Vol. 4, edited by L. Cheng, K. Brown, and W. Chai. Great Barrington, MA: Berkshire Publishing.

"Network Resources and Job Mobility in China's Transitional Economy," with Xianbi Huang. 2009. *Research in the Sociology of Work* 19:255-282.

"Sociology in China." 2008. *Contexts* 7(3):20-31.

"Urban Occupational Mobility and Employment Institutions: Hierarchy, Market, and Networks in a Mixed System." 2008. Pp. 165-183 in *Creating Wealth and Poverty in China*, edited by D. Davis and F. Wang. Palo Alto, CA: Stanford University Press.

"The Formation of Social Capital among Chinese Urbanites: Theoretical Explanation and Empirical Evidence." 2008. Pp. 81-104 in *Social Capital: An International Research Program*, edited by N. Lin and B. Erickson. Oxford and New York: Oxford University Press.

Institutional Transformation and the Dynamics of Social Stratification in Urban China, edited with L. Li. 2008. Beijing: Renmin University of China Press.

Elizabeth Heger Boyle

Professor

Ph.D. 1996 Stanford University

J.D. 1987 University of Iowa

Room 948 Social Sciences

(612) 624-3343

boyle014@umn.edu



INTEREST AREAS:

Sociology of Law; Globalization; Immigration; Human Rights.

CURRENT RESEARCH:

"The Cost of Rights or the Right Cost? The Impact of Global Economic and Human Rights Policies on Child Well-Being Since 1989." 2009-2011. NSF, Law and Social Sciences Program.

"The Impact of International Law on the Eradication of Female Genital Cutting," with Wenjie Liao.

"Integration of Demographic and Health Survey Data: A Pilot Using Female Genital Cutting Rates."

SELECTED PUBLICATIONS:

"Law and Culture in a Global Context: The Practice of Female Genital Cutting," with Amelia Corl. Forthcoming 2010. *Annual Review of Law and Social Science*.

"Women and Economic Development." Forthcoming 2010. *In Encyclopedia of Globalization*, edited by George Ritzer. New York: Sage Publications.

"Achieving Success in Business: A Comparison of Somali- and American Born Entrepreneurs in Minneapolis," with Shannon Golden and Yasin Jama. 2010. *The CURA Reporter* 40(1-2):43-51.

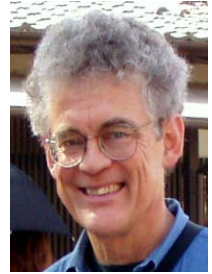
"International Human Rights Law, Global Economic Reforms, and Child Survival and Development Rights," with Minzee Kim. 2009. *Law and Society Review* 43(3):455-490.

"Culture, Structure, and the Refugee Experience in Somali Immigrant Family Transformation," with Ahmed Ali. 2009. *International Migration* 48(1):47-79.

"Young Refugees." 2009. Pp. 89-94 in *Youth and Young Adulthood: New Perspectives and Agendas*, edited by A. Furlong. New York: Routledge.

"Female Genital Cutting." 2008. Pp. 366-368 in *Encyclopedia of Social Problems*, edited by V. Parrillo. New York: Sage Publications.

Jeffrey P. Broadbent
Associate Professor
Ph.D. 1982 Harvard University
Room 1026 Social Sciences
(612) 624-1828
broad001@umn.edu



INTEREST AREAS:

Political Sociology; Network Analysis; Institutions and Culture; Social Movements; Japan; East Asia; Cross-national Comparison; Environmental Sociology.

CURRENT RESEARCH:

COMPON-Comparing Climate Change Policy Networks.
Comparative study of national political will to deal with global climate change by reducing greenhouse gas emissions, with research teams in 15 countries collecting equivalent network survey data. Funded by National Science Foundation

Enduring Patterns: Networks and Politics in Japan, the U.S. and Germany.

Pathways to Participation: Effects of international networks on the participation of environmental NGOs in government policy formation – the case of Japanese climate change policy.

Structure, Culture and Action: The effect of culture on social movements in East Asia.

Environmental movements/NGOs and the state in China, Taiwan, South Korea and Japan: Selective Permission and Mobilization Opportunities. Funded by East Asian Institute, Seoul, Korea.

Consilient Focus: Merging Social Scientific Approaches in the Study of National Policy Decision-Making Processes.

SELECTED PUBLICATIONS:

“East Asian Social Movements: Breaking the Mold.” Forthcoming 2010. In *East Asian Social Movements: Power, Protest and Change in a Dynamic Region*, edited with V. Brockman. New York: Springer.

“Science and Climate Change Policy Making: A Comparative Network Perspective.” 2010. Pp.187-214 in *Adaptation and Mitigation Strategies for Climate Change*, edited by A. Sumi, K. Fukushi and A. Hiramatsu. New York: Springer.

Workshop on Sociological Perspectives on Global Climate Change, edited with J. Nagel and T. Dietz. 2009. Arlington, VA: National Science Foundation and American Sociological Association.

Penny Edgell

Professor and Director of Graduate Studies
Ph.D. 1995 University of Chicago
Room 1039 Social Sciences
(612) 624-9828
edgell@umn.edu



INTEREST AREAS:

Sociology of Religion & American Religion; Sociology of Culture; Gender, Work, & Family; Symbolic Boundaries & Inequality

CURRENT RESEARCH:

Prof. Edgell is beginning a new research project on how religious, scientific, and legal frameworks intersect to shape how people understand contemporary social issues (e.g. like genetic engineering, Intelligent Design, or GLBT adoption). Her work on the National Survey of Religion and Family Life focuses on the support that religious communities and networks provide for managing work and family life across different racial and socio-economic contexts. She is also working with colleagues at Minnesota and across the country on a second wave of the American Mosaic Project, a study of how Americans make sense of racial, religious, and other forms of diversity in American life.

SELECTED PUBLICATIONS:

“Shared Visions? Diversity and Cultural Membership in American Life,” with Eric Tranby. 2010. *Social Problems* 57(2):175-204.

“Religious Influences on Understandings of Racial Inequality in the United States,” with Eric Tranby. 2007. *Social Problems*, 54(2):263-288.

“Religious Influences on Work–Family Trade-Offs,” with Samantha Ammons. 2007. *Journal of Family Issues*, 28(6):794-826.

“Beyond the Nuclear Family? Familism and Gender Ideology in Diverse Religious Communities,” with Danielle Docka. 2007. *Sociological Forum* 22(1):25-50.

“Atheists as ‘Other’: Moral Boundaries and Cultural Membership in American Society,” with Joseph Gerteis and Douglas Hartmann. 2006. *American Sociological Review* 72(2):211-234.

Religion and Family in a Changing Society. 2005. Princeton, NJ: Princeton University Press.

Gabrielle Ferrales

Assistant Professor

Ph.D. 2009, Northwestern University

J.D. 1997, Georgetown University

Room 1152 Social Sciences

(612) 624-5021

gferrales@umn.edu



INTEREST AREAS:

Law and Society; Gender; Criminology and Criminal Justice; International Criminal Law; Quantitative and Qualitative Methods; Factorial Survey Methods for Empirical Analysis.

CURRENT RESEARCH:

Prof. Ferrales's scholarship lies at the intersection of gender, crime and law. Her current research examines in three distinct case studies the legal treatment of gender-based violence in both domestic and international contexts including: a factorial survey quantitative analysis of the sentencing decisions of Iraqi judges; an examination of prosecutorial decision-making in a domestic violence unit of a state district attorney's office; and studying rape victimization survey data and field interviews collected in the Darfur region of Sudan.

SELECTED PUBLICATIONS:

"Collaboration and Resistance in the Punishment of Torture in Iraq: A Judicial Sentencing Experiment," with John Hagan and Guillermina Jasso. 2010. *Wisconsin International Law Journal* 28(1):1-33.

"The Public Sociology of Sanctioning Torture in Iraq: A Case Study of Forced Democracy and the Rule of the Law," with John Hagan and Guillermina Jasso. 2008. *Actes de la Recherche en Sciences Sociales* 174:34-43.

"How Law Rules: Torture, Terror, and the Normative Judgments of Iraqi Judges," with John Hagan and Guillermina Jasso. 2008. *Law and Society Review* 42(3):605-643.

- 2008 Law and Society Association Best Article Prize

"Swaying the Hand of Justice: The Internal and External Dynamics of Regime Change at the International Criminal Courts of the Former Yugoslavia," with John Hagan and Ron Levi. 2006. *Law & Social Inquiry* 31(3):585-616.

"Sociology as a Vocation: Reputations and Group Cultures in Graduate School," with Gary Alan Fine. 2005. *The American Sociologist* 36(2):57-75.

Joseph Gerteis

Associate Professor

Ph.D. 1999, University of North Carolina, Chapel Hill

Room 1125 Social Sciences

(612) 624-1615

gerte004@umn.edu



INTEREST AREAS:

Historical Sociology; Politics and Social Movements; Social Theory; Diversity and Solidarity in American Society.

CURRENT RESEARCH:

Prof. Gerteis is interested in the dynamics of difference and solidarity and how these play into the formation of group boundaries, interests, and identities. His recent work has involved a book on interracial labor movements of the late 19th century and papers from the American Mosaic Project exploring how Americans think about issues of diversity and solidarity in modern America through the lenses of race and religion. He is currently exploring how Americans think about both the benefits and costs of diversity, as well as how claims about American national identity often involve racial and religious exclusions.

SELECTED PUBLICATIONS:

“An Empirical Assessment of Whiteness Theory: Hidden from How Many?” with Doug Hartmann and Paul Croll. 2009. *Social Problems* 56(3):403-424.

Class and the Color Line: Interracial Class Coalition in the Knights of Labor and the Populist Movement. 2007. Durham, NC: Duke University Press.

Classical Sociological Theory, edited with Craig Calhoun, James Moody, Steven Pfaff, and Indermohan Virk. 2007. 2nd ed. Malden, MA: Blackwell.

“Atheists as 'Other': Moral Boundaries and Cultural Membership in American Society,” with Penny Edgell and Douglas Hartmann. 2006. *American Sociological Review* 71(2):211-234.

“Dealing with Diversity: Mapping Multiculturalism in Sociological Terms,” with Douglas Hartmann. 2005. *Sociological Theory* 23(2):218-240.

“Nationalism in America? The Case of the Populist Movement,” with Alyssa Goolsby. 2005. *Theory and Society* 34(2):197-225.

Michael Goldman
Associate Professor
McKnight Presidential Fellow
Ph.D. 1994 University of California, Santa Cruz
Room 952 Social Sciences
(612) 624-0051
mgoldman@umn.edu



INTEREST AREAS:

Transnational, Political, Environmental, and Development Sociology; Global Cities; Transnational Institutions (international finance, expert networks).

CURRENT RESEARCH:

Global cities of the South; the making of Bangalore into a world city; "Water for All"/ water privatization policies; in/outsourcing in the Twin Cities.

SELECTED PUBLICATIONS:

"Speculative Urbanism and the Making of the next World City." Forthcoming. *International Journal of Urban and Regional Research*.

"Making World Cities," with Wes Longhofer. 2009. *Contexts* 8(1, Winter): 32-36.

"How 'Water for All!' Became Hegemonic: The Power of the World Bank and its Transnational Policy Networks." 2007. Special issue on global water policy. *Geoforum* 38(5):786-800.

"Under New Management: Historical Context and Current Challenges at the World Bank." 2007. Special issue on Wolfowitz's bank. *Brown Journal of World Affairs* 8(2, Summer):11-25.

"El neoliberalismo verde." 2006. Pp. 185-210 in *Las Politicas de la Tierra*, edited by A. Guerra and J. F. T. Tortajada. Madrid: Editorial Sistema.

Imperial Nature: The World Bank and Struggles for Social Justice in the Age of Globalization. 2005. New Haven, CT and London: Yale University Press. Yale UP paperback edition, 2006; India edition, Hyderabad: Orient Longman Press, 2006; Japanese edition, Kyoto: Kyoto University Press, 2008.

"World Bank." 2005. Pp. 765-770 in *Encyclopedia of International Development*, edited by T. Forsyth. Oxford and New York: Routledge.

"Tracing the Routes/Roots of World Bank Power." 2005. Special issue on new development policy. *International Journal of Sociology and Social Policy* 25(1/2):10-29

Teresa Gowan

Assistant Professor
Ph.D. 2003 University of California, Berkeley
Room 1080 Social Sciences
(612) 626-1863
tgowan@umn.edu



INTEREST AREAS:

Urban Sociology; Ethnography; Poverty and Inequality; Deviance and Social Control.

CURRENT RESEARCH:

"Addiction Treatment as Neoliberal Poverty Management." Over the last 30 years we have seen a fundamental shift in American models of inequality and poverty from structural to individual understandings, starting with the reworking of historical fears of a self-reproducing culturally pathological ghetto "underclass" in the late 1970s. Over the same period the mandate of "rehab" has increased in scope until its institutional forms and core narratives have become central to contemporary strategies of poverty management. Prof. Gowan's second long-term research project addresses this crucial, yet understudied, area of contemporary American social policy, examining the crucial role of addiction and "rehab" within contemporary understandings of poverty and crime.

With Sarah Whetstone, Zachary Binsfeld, Tanja Andic, and Kristin Haltinner, Prof. Gowan is pursuing long-term ethnographic fieldwork in some local treatment institutions which exemplify the most important contemporary approaches to drug treatment. Their sites include a "therapeutic community" which brings together intensive "behavior modification" and elements from the "12-step" philosophy of AA; a more explicitly faith-based institution focused on spiritual renewal; and a weekly drop-in group following the alternative "harm reduction" model which emphasizes practical, "non-judgmental" health education and outreach.

SELECTED PUBLICATIONS:

Hobos, Hustlers, and Backsliders: Homeless in San Francisco. 2010. Minneapolis, MN: University of Minnesota Press.

"What's Social Capital Got To Do With It? The Ambiguous (and Overstated) Relationship between Social Capital and Ghetto Underemployment." Forthcoming. *Critical Sociology*.

Review of *Lost in Space: The Criminalization, Globalization, and Urban Ecology of Homelessness*, by Randall Amster. 2009. *Contemporary Sociology* 38(5):417-419.

"New Hobos or Neoromantic Fantasy? Urban Ethnography Beyond the Neoliberal Disconnect." 2009. *Qualitative Sociology* 32(3):231-257.

Eric Grodsky
Associate Professor
Ph.D. 2002 University of Wisconsin-Madison
Room 1168 Social Sciences
(612) 624-7542
egrodsky@umn.edu



INTEREST AREAS:

Sociology of Education; Stratification; Quantitative Methods.

CURRENT RESEARCH:

STEM in the New Millennium examines how the effects of grades, test scores and course taking on college attendance and declaring a STEM major have changed over time. In a related project we will evaluate the relationship between STEM course taking and labor market outcomes for students who complete sub-baccalaureate degrees.

Ready or Not? California's Early Assessment Program and the Transition to College evaluates how informing students of their need for remediation while in high school impacts students senior year course taking patterns, transition to college and need for remediation upon college entry.

Should Everyone Go to College? In this project we take seriously the question of whether or not America is best served by pushing more and more students into higher education. Reviewing empirical work on the chances of degree completion and the earnings distributions of students who start but fail to complete their postsecondary credential, we suggest that higher education is a kind of a lottery in which those who win do quite well but those who lose are not necessarily better off than they would have been had they not played at all.

SELECTED PUBLICATIONS:

"Something to Fall Back On: Community Colleges as a Safety Net," with Demetra Kalogrides. Forthcoming. *Social Forces*.

Equal Opportunity in Higher Education: The Past and Future of California's Proposition 209, edited with Michal Kurlaender. 2010. Cambridge: Harvard Education Press.

"The Intersection of Course-Taking and Test Scores: Differences by Students' Race/Ethnicity and School Context," with C. Riegle-Crumb. 2010. *Sociology of Education* 83(3):248-270.

"Those Who Choose and Those Who Don't: Social Background and College Orientation," with C. Riegle-Crumb. 2010. *The Annals of the American Academy of Political and Social Science* 627(1):14-35.

Douglas Hartmann

Professor

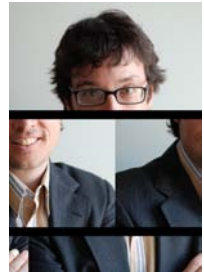
Contexts, Co-editor

Ph.D. 1997 University of California, San Diego

Room 835 Social Sciences

(612) 624-0835

hartm021@umn.edu



INTEREST AREAS:

Race and Ethnicity; Culture (including popular culture, sports, and religion); Social Movements and Social Change; American Society; Field Methods; Contemporary Theory.

CURRENT RESEARCH:

Race, Ethnicity, and Immigration; Sports-Based Risk Prevention; Race, Religion, and Pluralism/ The "American Mosaic Project"; Qualitative Perspectives on the Transition to Young Adulthood.

SELECTED PUBLICATIONS:

"White Ethnicity in Twenty-First Century America: Findings from a New National Survey," with Jason Torkelson. 2010. *Ethnic and Racial Studies* 33(8):1310-1331.

"An Empirical Assessment of Whiteness Theory: Hidden from How Many?" with Joseph Gerteis and Paul Croll,. 2009. *Social Problems* 56(3):403-424.

"Activism, Organizing, and the Symbolic Power of Sport: Reassessing Harry Edwards's Contributions to the 1968 Olympic Protest Movement." 2009. *Journal for the Study of Sports and Athletics in Education* 3(2, Summer):181-195.

"Critical Whiteness Theories and the Evangelical 'Race Problem': Extending Emerson and Smith's Divided by Faith," with Eric Tranby. 2008. *Journal for the Scientific Study of Religion* 47(3):341-359.

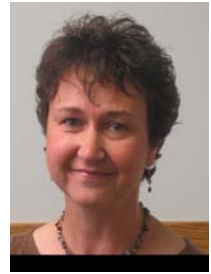
Ethnicity and Race: Making Identities in a Changing World, with Stephen Cornell. 2007. 2nd edition. Newbury Park, CA: Pine Forge Press.

"Diversity in Everyday Discourse: The Cultural Ambiguities and Consequences of 'Happy Talk,'" with Joyce Bell. 2007. *American Sociological Review* 72(December):895-914.

"Midnight Basketball and the 1994 Crime Bill Debates: The Operation of a Racial Code," with Darren Wheelock. 2007. *The Sociological Quarterly* 48(2):315-342.

Kathy Hull

Associate Professor
Ph. D. 2001 Northwestern University
Room 1131 Social Sciences
(612) 624-4339
hull@umn.edu



INTEREST AREAS:

Culture; Law; Social Movements; Family; Gender and Sexuality.

CURRENT RESEARCH:

“The Construction and Contestation of ‘Family’ in LGBT Communities.” This project draws upon interviews, focus groups, and archival material to examine the close relationships in the lives of sexual minorities and gender variant people. LGBT people are often invoked as threats to family in “family values” discourses, even as the gay rights movement focuses more than ever on a range of family issues including marriage and parenting rights. This project seeks to advance theorizing about nontraditional families and to assess how well the current efforts of the national LGBT movement match the needs and priorities of its constituencies.

“Religion, Science and the Law in Everyday Life and Experience.” This project (with Professor Penny Edgell) uses focus group discussions of contemporary controversies to examine how ordinary citizens reconcile religious beliefs with legal and scientific expertise.

SELECTED PUBLICATIONS:

“The Changing Landscape of Love and Marriage,” with Ann Meier and Timothy Ortyl. 2010. *Contexts* 9(2):32-37.

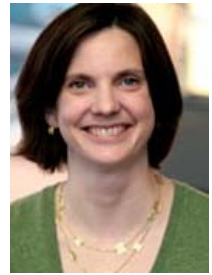
Review of *Courting Change: Queer Parents, Judges, and the Transformation of American Family Law*, by Kimberly D. Richman. 2010. *American Journal of Sociology* 115(4):1330-32.

“Young Adult Relationship Values at the Intersection of Gender and Sexuality,” with Ann Meier and Timothy Ortyl. 2009. *Journal of Marriage and Family* 71(3):510-525.

“Men and Women of the Bar: The Impact of Gender on Legal Careers,” with Kenneth G. Dau-Schmidt, Marc S. Galanter, and Kaushik Mukhopadhyaya. 2009. *Michigan Journal of Gender and Law* 16:49-145.

Same-Sex Marriage: The Cultural Politics of Love and Law. 2006. Cambridge: Cambridge University Press.

Erin Kelly
Associate Professor
Ph.D. 2000 Princeton University
Room 1133 Social Sciences
(612) 624-0228
kelly101@umn.edu



INTEREST AREAS:

Organizations and Work; Gender; Family and the Life Course; Law and Social Policy.

CURRENT RESEARCH:

Prof. Kelly studies changes in U.S. workplaces and their effects on employees, families, and organizations. She is principal investigator, with Phyllis Moen, of the Flexible Work and Well-Being Center, part of the Work, Family, and Health Network funded by the National Institutes of Health and the Centers for Disease Control. See <<http://www.flexiblework.umn.edu>> for more information.

Prof. Kelly has investigated flexibility initiatives, non-compliance with the Family and Medical Leave Act, sexual harassment policies, and employer-sponsored child care benefits, as well as the effects of some of these policies on the representation of women and African-Americans in managerial positions.

SELECTED PUBLICATIONS:

"Failure to Update: An Institutional Perspective on Noncompliance with the Family & Medical Leave Act." 2010. *Law and Society Review* 44(1):33-66.

"Gendered Challenge, Gendered Response: Confronting the Ideal Worker Norm in a White-Collar Organization," with Erin L. Kelly, Samantha K. Ammons, and Phyllis Moen. 2010. *Gender and Society* 24(3):281-303.

"Getting There from Here: Research on the Effects of Work-Family Initiatives on Work-Family Conflict and Business Outcomes," with Ellen E. Kossek, Leslie Hammer, Mary Durham, Jeremy Bray, Kelly Chermack, and Lauren Murphy. 2008. *Academy of Management Annals* 2(1):305-334.

"How to Stop Harassment: Professional Construction of Legal Compliance in Organizations," with Frank Dobbin. 2007. *American Journal of Sociology* 112(4):1203-43.

"Best Practices or Best Guesses? Assessing the Efficacy of Corporate Affirmative Action and Diversity Policies," with Alexandra Kaley, and Frank Dobbin. 2006. *American Sociological Review* 71(4):589-617.

David Knoke

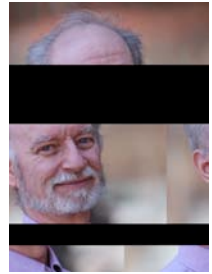
Professor

Ph.D. 1972 University of Michigan

Room 939 Social Sciences

(612) 624-6816

knoke001@umn.edu



INTEREST AREAS:

Organizations; Social Networks; Economic Sociology; Social Statistics.

CURRENT RESEARCH:

"The Effect of Social Networks and Team Climate on Team Innovation and Client Outcomes in Health Care Teams." Co-PI with Prof. Doug Wholey, NSF.

"Multilevel Latent Class and Social Network Models for Observational Adolescent Obesity Data." Co-PI with Profs. Melanie Wall, Richard MacLehose, Dianne Neumark-Sztainer, Mary Story, and Peter Hannan. NIH, NICHD.

SELECTED PUBLICATIONS:

"Terror Networks." Forthcoming. In *Encyclopedia of Social Networking*, edited by George Barnett. Thousand Oaks, CA: Sage.

"Strategic Alliances," with Dalhia Mani. Forthcoming. In *Encyclopedia of Social Networking*, edited by G. Barnett. Thousand Oaks, CA: Sage.

"Policy Networks." Forthcoming. *Social Network Analysis: A Handbook*, edited by J. Scott and P. Carrington. Thousand Oaks, CA: Sage.

"Community Philanthropy," with Xi Zhu. 2010. Pp. 533-539 in *The International Encyclopedia of Civil Society*, edited by H. Anheier and S. Toepler. New York: Springer Science + Business Media.

"Playing Well Together: Creating Corporate Social Capital in Strategic Alliance Networks." 2009. *American Behavioral Scientist* 52:1690-1708.

"Political Perspectives on Interorganizational Networks," with Xinxiang Chen. 2008. Pp. 441-472 in *The Oxford Handbook of Interorganizational Relations*, edited by S. Cropper, M. Ebers, C. Huxham, and P. Smith Ring. Oxford: Oxford University Press.

Social Network Analysis, with Song Yang. 2008. 2nd ed. Thousand Oaks, CA: Sage.

"Beyond Profit? Sectoral Differences in High-Performance Work Practices," with Arne L. Kalleberg, Peter V. Marsden and Jeremy Reynolds. 2006. *Work and Occupations* 33:271-302.

Carolyn Liebler

Assistant Professor

Ph.D. 2001 University of Wisconsin, Madison

Room 1148 Social Sciences

(612) 626-7252

liebler@umn.edu



INTEREST AREAS:

Race and Ethnicity; Sociology of the Family and Life Course; Social Demography; Social Stratification; Indigenous Peoples; Social Support.

CURRENT RESEARCH:

Prof. Liebler is fascinated by the translation of individuals' racial identities into their answers to standardized questions about race, as well as the ways in which these answers are grouped to form the statistics used by social scientists and policy makers. Several of her ongoing research projects address aspects of the process of translation from racial identities of individuals to race statistics describing a society, a process which is complicated by changes in identities and changes in questionnaire wording.

Current research on this topic includes "Intertwining the History and Biography of Race in America: American Indians, Whites, Blacks, and Multiracials in the 21st Century" with Meghan Zacher. This paper uses maps and the history of race in local areas in the US to understand current patterns of racial identification.

The newly opened Minnesota Research Data Center is providing the best available data for Prof. Liebler and student collaborators to study the following questions: Why do some people answer the new race question differently than might be expected? And what are the characteristics of people who have especially fluid answers to census questions about race?

SELECTED PUBLICATIONS:

"A Group in Flux: Multiracial American Indians and the Social Construction of Race." 2010. Pp. 131-144 in *Multiracial Americans and Social Class: The Influence of Social Class on Racial Identity*, edited by K. O. Korgen. New York and Oxford: Routledge Press.

"Homelands and Indigenous Identities in a Multiracial Era." 2010. *Social Science Research* 39:596-609.

"A Practical Approach to Using Multiple-Race Response Data: A Bridging Method for Public-Use Microdata," with Andrew Halpern-Manners. 2008. *Demography* 45(1):143-155.

"Pondering Poi Dog: The Importance of Place to the Racial Identification of Mixed-Race Native Hawaiians," with Shawn Malia Kana'iupuni. 2005. *Ethnic and Racial Studies* 28(4):687-721.

Enid Lynette Logan

Assistant Professor
Ph.D. 2005 University of Michigan
Room 956 Social Sciences
(612) 624-3598
elogan@umn.edu



INTEREST AREAS:

Contemporary U.S. Race Relations; Sociology of Afro-Latin Populations; Family, Marriage and Gender; Race and Media; Race and Law; Historical and Comparative Methods.

CURRENT RESEARCH:

(Book) *At This Defining Moment”: Barack Obama’s Presidential Candidacy, the Anxieties of Race, and the Perils and Promises of the “New Racial Politics*. The key issue explored in this book is how Barack Obama’s presidential candidacy served to reflect and shape the dynamics of race in the contemporary U.S. Themes include Obama’s expansion of the construct of American national identity, his rhetoric of personal responsibility, debates about the relative primacy of gender and race, defining “good” black politicians and “bad” ones, and how to play the new politics of race in the “post-post” civil rights U.S.—to win. Forthcoming 2011. NYU Press,.

“Your Cool, Hip, Black Friend: College-Student Perspectives on Race, Gender and the 2008 Presidential Election.” Based upon 125 in-depth interviews. Central questions included, which, in your opinion, would be more significant for the country—the selection of a woman, or a black American, as president? Why do you think that Sarah Palin is so popular with some voters? What, if anything, have you learned about America, Americans, race relations, other people you know, or even about yourself, through the process of observing the election? Data analysis is in progress.

SELECTED PUBLICATIONS:

“Each Sheep with Its Mate: Marking Race and Legitimacy in Cuban Ecclesiastical Archives, 1890-1940.” 2010. *The New West Indian Guide/ Nieuwe West-Indische Gids* 84(10-2):5-39.

“The 1899 Cuban Marriage Law Controversy: Church, State and Empire in the Crucible of Nation.” 2008. *Journal of Social History* 42(2):469-494.

“The Social Significance of Barack Obama.” 2008. *Contexts* 7(4, Fall):16-21.

“The Nation’s Fury over “Crack Babies.” 2003. 2nd ed. Pp. 368- 382 in *Drugs, Crime, and Justice: Contemporary Perspectives*. edited by L. K. Gaines and P. B. Kraska. Prospect Heights, IL: Waveland Press.

Ross Macmillan

Associate Professor and Director, Life Course Center
Ph.D. 1998 University of Toronto
Room 1014a Social Sciences
(612) 624-6509
macmi005@umn.edu



INTEREST AREAS:

Life Course Studies; Research Methodology and Social Statistics.

CURRENT RESEARCH:

“Unraveling the Education-Health Nexus in the Era of ‘New’ Immigration.” With funding from the UMN Child, Youth and Family Consortium, the first phase examines education and health among contemporary immigrants in several national surveys. The second phase involves a community-based participatory longitudinal study with embedded interventions that seeks to understand education as a vehicle for enhancing health outcomes.

“The Transition to Adulthood in Contemporary.” Funded by the NSF, this research uses a latent pathway approach and data from the National Longitudinal Surveys to examine social change the transition to adulthood between 1970 and 2000.

“Weight and Social Change.” This research examines various aspects of changes in body mass in American society over the past 30 years, including its association with self-perceived health, structural contingencies in educational disparities in body mass, and variability in the relationship between excess weight and subsequent mortality.

“Genetic Vulnerability, Stress Processes in Pathways into Adulthood, and SES Gradients in Cardiovascular Disease.” Funded by the NIH, this research is a multisite collaboration to investigate genetic-life course-stratification interactions associated with cardiovascular disease in early adulthood

“The Healthy Aging Initiative.” This project involves collaboration between the University of Minnesota, Hennepin County Human Services and Public Health, and Hennepin County Medical Center. The research is multifaceted in examining aspects of health and aging among the diverse population of baby boomers aging into older adulthood in the Twin Cities area.

SELECTED PUBLICATIONS:

Biography and the Sociological Imagination: Contexts and Contingencies, with Michael Shanahan. 2007. Contemporary Societies Series. New York: W.W. Norton and Company.

Carl P. Malmquist

Professor

M.D. 1959 University of Minnesota

Room 1174 Social Sciences

(612) 624-4147

malmq001@umn.edu



INTEREST AREAS:

Juvenile Justice; Homicide; Adolescence; Law and Society; Law and the Mental Health System.

CURRENT RESEARCH:

Depression and Its Relationship to Violence; Characteristics of Juveniles Who Commit Parricides; Infanticide and Comparative Legal Issues Post-Termination Relationships with Professionals; Borderline Personality Disorders: A High-Risk Group for Violence.

SELECTED PUBLICATIONS:

"Adolescent Parricide as a Clinical and Legal Problem," 2010. *Journal of the American Academy of Psychiatry and the Law* 38(1):73-79.

"School Violence." 2008. Pp. 537-554 in *Textbook of Violence Assessment and Management*, edited by R. I. Simon and K. Tardiff. Arlington, VA: American Psychiatric Publishing, Inc.

"Combined Murder-Suicide." 2006. Pp. 495-510 in *Textbook of Suicide Assessment and Management*, edited by R. I. Simon and R. E. Hales. Washington, DC: American Psychiatric Publishing, Inc.

Homicide: A Psychiatric Perspective. 2006. 2nd ed. Washington, DC: American Psychiatric Publishing, Inc.

- 2006 American Psychological Association Guttmacher Award

"Juveniles and the Adult Criminal Justice System." 2003. Pp. 489-494 in *Textbook of Adolescent Psychiatry*, edited by .R. Ratner and R. Rosner. London: Arnold Press.

Ann Meier
Associate Professor
Ph.D. 2003 University of Wisconsin, Madison
Room 1127 Social Sciences
(612) 626-7230
meierann@umn.edu



INTEREST AREAS:

Family and Life Course; Adolescent and Young Adult Development; Research Methods.

CURRENT RESEARCH:

“Parental Age and Child Health and Development.” Delayed childbearing and a recent up-tick in teen birth rates have resulted in increasing variability in parents’ age at the birth of their first child. This project examines how parental age shapes children’s health and development.

“Social Development into Adulthood.” This project investigates the ways in which adolescent social relationships promote or inhibit the development of adult family relationships.

“Adolescent Sexual Activity and Well-Being.” This project examines the effects of early sexual activity on a number of domains of adolescent life. A current study examines the role of friend and school norms in shaping the effects of sex on mental health, academic outcomes, and risk behaviors.

SELECTED PUBLICATIONS:

“Are Both Parents Always Better than One? Parental Conflict and Young Adult Well-being,” with Kelly Musick. Forthcoming 2010. *Social Science Research* 39(5).

“Young Adult Relationship Values at the Intersection of Gender and Sexuality,” with Kathleen Hull and Timothy Ortyl. 2009. *Journal of Marriage and Family* 71(3):510-525.

“Romantic Relationships from Adolescence to Adulthood: Evidence from the National Longitudinal Study of Adolescent Health,” with Gina Allen. 2009. *The Sociological Quarterly* 50:308-335.

“Adolescent First Sex and Subsequent Mental Health.” 2007. *American Journal of Sociology* 112(6):1811-1847.

“Adolescents’ Transition to First Intercourse, Religiosity and Attitudes about Sex.” 2003. *Social Forces* 81(3):1031-1052.

Phyllis Moen

Professor, McKnight Presidential Chair in Sociology
Ph.D. 1978 University of Minnesota
Room 1123 Social Sciences
(612) 625-5483
phylmoen@umn.edu



INTEREST AREAS:

Work, Retirement, and Organizations; Families and the Gendered Life Course; Health and Well-Being; Social Policy and Social Change.

CURRENT RESEARCH:

Prof. Moen co-directs (with Prof. Erin Kelly) the *Flexible Work and Well-Being Center*, part of a larger NIH-funded research network initiative seeking to study ways to promote individual and family health and life quality by increasing the degree of flexibility around the clockwork of paid work.

Prof. Moen is also engaged in research focusing on the changing nature of careers, the experiences of dual-earner couples, and the plans and transitions of baby-boomers as they move toward and into retirement.

SELECTED PUBLICATIONS:

"A Life Course Approach to the Third Age." Forthcoming. In *Gerontology in the Era of the Third Age: Implications and Next Steps*, edited by D. C. Carr and K. Komp. New York: Springer Publications.

"Gendered Challenge, Gendered Response: Confronting the Ideal Worker Norm in a White-Collar Organization," with Erin L. Kelly, Samantha K. Ammons, and Kelly Chermack. 2010. *Gender and Society* 24(3):281-303.

"Risk, Resilience, and Life-Course Fit: Older Couples' Strategic Adaptations to Job Displacement," with Stephen Sweet and Rachele Hill. 2010. Pp. 283-309 in *New Frontiers in Resilient Aging*, edited by P. S. Fry and C. L. M. Keyes. New York: Cambridge University Press.

"Customizing Careers by Opting Out or Shifting Jobs: Dual-earners Seeking Life-course 'Fit'," with Qinlei Huang. Pp. 73-94 in *Workplace Flexibility: Realigning 20th Century Jobs to 21st Century Workers*, edited by K. Christensen and B. Schneider. Ithaca, NY: Cornell University Press.

"Working Families under Stress: Socially Toxic Job Time Cages and Convoys," with Erin L. Kelly. 2009. Pp. 31-61 in *Handbook of Families and Work: Interdisciplinary Perspectives*, edited by D. R. Crane and E. J. Hill. Lanham, MD: University Press of America.

Jeylan T. Mortimer

Professor

Ph.D. 1972 University of Michigan
Room 1014b Social Sciences
(612) 624-4064
morti002@umn.edu



INTEREST AREAS:

The Life Course; Social Psychology; Work.

CURRENT RESEARCH:

The “Youth Development Study,” supported by the NICHD, examines pathways through the transition to adulthood, mental health and attainment, and how parental trajectories from adolescence to adulthood influence their children.

SELECTED PUBLICATIONS:

“Explaining the Motherhood Wage Penalty During the Early Occupational Career,” with Jeremy Staff. Forthcoming. *Demography*.

“Intrinsic Work-Value Reward Dissonance and Work Satisfaction during Young Adulthood,” with Erik J. Porfeli. Forthcoming. *Journal of Vocational Behavior*.

“‘Holding On’ or ‘Coming to Terms’ with Educational Underachievement: A Longitudinal Study of Ambition and Attainment,” with Mayumi Uno, Minzee Kim, and Michael Vuolo. Forthcoming. *New Directions for Research on Child and Adolescent Development*.

Classic and Contemporary Perspectives in Social Psychology, edited with Sharon E. Preves. 2010. Oxford: Oxford University Press.

“Adolescent Work Experience and Self-efficacy,” with Keith A. Cunnie, and Nicole MartinRogers. 2009. *International Journal of Sociology and Social Policy* 29(3):164-175.

“Family Socialization, Economic Self-efficacy, and the Attainment of Financial Independence in Early Adulthood,” with Jennifer C. Lee. 2009. *Longitudinal and Life Course Studies* 1(1):45-62.

“From Social Structure and Personality to Life Course Sociology: Glen Elder’s Legacy at the University of Minnesota.” 2008. *Research on Human Development* 5:216-230.

Joshua Page
Assistant Professor
Ph.D. 2007 University of California, Berkeley
Room 935 Social Sciences
(612) 624-9333
page@umn.edu



INTEREST AREAS:

Crime, Law, Deviance, and Punishment; Labor and Unionization; Political Sociology; Qualitative Research Methods; Social Theory.

CURRENT RESEARCH:

The Minnesota Juvenile Justice Transitions Project. This study analyzes the transition of young offenders from Minnesota juvenile justice institutions back into their communities. It investigates the following question: What factors impede or facilitate the "reentry" process for juvenile offenders after release?

Minnesota Correctional Officer Survey Project. This research analyzes the living and working conditions in adult state prisons. It also examines correctional officers' attitudes and beliefs about correctional policies and practices. Amy Lerman, a political scientist in California, conducted a similar survey of correctional officers in that state (Professor Page adapted Ms. Lerman's survey instrument for the Minnesota study). Based on our respective research, Ms. Lerman and Prof. Page will compare the experiences and dispositions of correctional officers in California and Minnesota.

SELECTED PUBLICATIONS:

The 'Toughest Beat': Politics, Punishment, and the Prison Officers' Union in California. Forthcoming. New York: Oxford University Press.

"A Game You Can't Win - A Culture Review," with Ross Macmillan. 2009. *Contexts* 8(3):70-72.

"Manufacturing Affinity: The Fortification and Expression of Ties between Prison Officers and Crime Victims." 2008. *Journal of Contemporary Ethnography*, 37(6):745-777.

- 2010 American Sociological Association, Labor and Labor Movements Section, Best Article Award

"Mr. Blue and the Fatal Circle: A Tribute to Edward Bunker." 2005. *The Chronicle of Higher Education Review* 52(3, September):B19.

"Eliminating the Enemy: The Import of Denying Prisoners Access to Higher Education in Clinton's America." 2004. *Punishment and Society* 6(4):357-3

Lisa Park

Associate Professor
Ph.D. 1998 Northwestern University
Room 1035 Social Sciences
(612) 624-8563
lspark@umn.edu



INTEREST AREAS:

Immigration and Welfare Policy; Immigrant Health Care; Race, Class, and Gender; Asian American Studies; Environmental Justice; Urban Theory and Methods.

CURRENT RESEARCH:

Prof. Park's current research project, "Bearing the Burden: Immigrant Women's Health Care in the Age of Welfare Reform" investigates the impact of federal welfare and immigration policies on Asian and Latina immigrant women's prenatal care access. This study focuses on the political ramifications of contemporary constructions of pregnant immigrant women as "public charges" or burdens upon the state. She recently completed a book, *The Slums of Aspen: Race, Immigration, and Environmental Privilege*. This joint project with D. N. Pellow examines the politics of immigrant labor in the global economy. By analyzing community reactions to growing numbers of low-income Latino immigrant workers in the exclusive tourist town of Aspen, Colorado, this study identifies how "environmentalism" is used as a rhetorical tool for promoting a particular idyllic image of a post-industrial refuge from racism and poverty. Prof. Park is also in the early stages of a new research project on the household health strategies among immigrant and refugee families.

SELECTED PUBLICATIONS:

The Slums of Aspen: Race, Immigration, and Environmental Privilege. Forthcoming. Co-authored with D. N. Pellow. New York: New York University Press.

"Challenging Public Charge Policy: Coalitional Immigrant Community Strategies." Forthcoming. *Journal of Asian American Studies*.

"Continuing Significance of the Model Minority Myth: The Second Generation." 2008. *Social Justice* 35(2):134-144.

Consuming Citizenship: Children of Asian Immigrant Entrepreneurs. 2005. Palo Alto: Stanford University Press.

Silicon Valley of Dreams: Immigrant Labor, Environmental Injustice, and the High Tech Global Economy. 2002. Co-authored with D. N. Pellow. New York: New York University Press.

David Pellow

Professor, Don Martindale Endowed Chair
Ph.D. 1998 Northwestern University
Room 1070 Social Science
(612) 624-5006
dpellow@umn.edu



INTEREST AREAS:

Environmental Justice Studies; Racial and Ethnic Inequality; Transnational Social Movements; Qualitative Research Methods; Labor Studies; Immigration.

CURRENT RESEARCH:

Prof. Pellow is mainly interested in the intersections between social inequality and environmental conflict. He continues to work on transnational environmental justice movements and global policy frameworks concerning sustainability. He is also working on a study of environmental, labor, and immigration conflicts in Colorado's Roaring Fork Valley (with Lisa Sun-Hee Park).

SELECTED PUBLICATIONS:

"Environmental Justice," with Paul Mohai and J. Timmons Roberts. 2009. *Annual Review of Environment and Resources* 34:405-430.

"We Didn't Get the First 500 Years Right, So Let's Work on the Next 500 Years': A Call for Transformative Analysis and Action." 2009. *Environmental Justice* 2(1):3-8.

"The Global Waste Trade and Environmental Justice Struggles." 2009. Pp. 225-236 in *Handbook on Trade and the Environment*, edited by K. P. Gallagher. Northampton, MA: Edward Elgar Publishing.

The Treadmill of Production: Injustice and Unsustainability in the Global Economy, with Kenneth A. Gould and Allan Schnaiberg. 2008. Boulder, CO: Paradigm Publishers.

"The State and Policy: Imperialism, Exclusion, and Ecological Violence as State Policy." 2008. Pp. 47-58 in *Twenty Lessons in Environmental Sociology*, edited by K. A. Gould and T. L. Lewis. New York: Oxford University Press.

"Silicon Valley," with Lisa Park. 2008. 2nd edit. Vol. 7. Pp. 510-511 in *International Encyclopedia of the Social Sciences*, edited by W. A. Darity, Jr. Detroit, MI: Thompson Gale.

Joel Samaha

Professor

Ph.D. 1972 Northwestern University

J.D. 1961 Northwestern University

1033 Social Sciences

(612) 624-3529

jbs@umn.edu



INTEREST AREAS:

Criminal Law and Procedure in U.S. Society; History of Criminal Justice.

CURRENT RESEARCH:

Prof. Samaha has written three influential textbooks, which are used at 465 colleges in 48 states. Joel's teaching methods challenge students' ideas and assumptions about criminal justice, and forces them to admit that other ideas are worth considering and studying. Prof. Samaha's students find their lives and academic careers changed by this experience. A former student claims, "Joel's style challenges the student to take the risks necessary to learn and achieve new understandings of the subject matter—and a great deal about themselves."

Prof. Chris Uggen, Department Chair, recognizes his influence and success claiming that Prof. Samaha has "shaped the instruction of criminal justice courses in every state and had a profound impact on the administration of criminal justice in Minnesota."

Many of his former students have gone on to become professors, academics, and criminal justice leaders. "I have never met anyone who combined the depth of knowledge of law and history with [the] genius for analytical reasoning and powerful oratory," stated a former student. "Joel is one of a kind."

"Teaching undergraduates, to me, means making students uncomfortable with their assumptions.... I don't see my job as picking the right or best assumptions for students, but as driving home a different point: that there are several reasonable meanings to any topic worth studying."

SELECTED PUBLICATIONS:

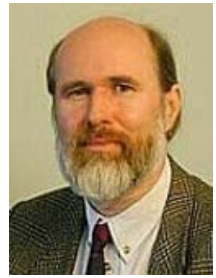
Criminal Procedure. 2010. 8th ed. Belmont, CA: Wadsworth.

Criminal Law. 2009. 10th ed. Belmont, CA: Wadsworth.

Criminal Justice. 2008. 7th ed. Belmont, CA: Wadsworth.

Joachim J. Savelsberg

Professor
Dr. rer. pol. 1982 University of Trier, FRG
Room 1144 Social Sciences
(612) 624-0273
save1001@umn.edu



INTEREST AREAS:

Knowledge; Law, Crime & Punishment; Human Rights; Comparative; Theory.

CURRENT RESEARCH:

Collective Representations and Memories of Atrocities after Judicial Intervention: Darfur in International Comparison" NSF.

SELECTED PUBLICATIONS:

"Atrocities, Law and Collective Memory," with Ryan D. King. Forthcoming 2011. (ASA Rose Monograph Series.) New York: Russell Sage Foundation Press.

"Franz Kafka: Bureaucracy, Law and Abuses of the 'Iron Cage'." Forthcoming 2010. In *Sociological Insights of Great Thinkers: Sociology through Literature, Philosophy, and Science*, edited by C. Edling and J. Rydgren, Oxford: Praeger

"Collins Meets Criminology: Intellectual Change in a Policy-oriented Field," with Sarah M. Flood. Forthcoming. *Sociological Forum*.

"Globalization and States of Punishment." Forthcoming. In *Comparative Criminology and Globalization*, edited by D. Nelken. Farnham: Ashgate.

Crime and Human Rights: Criminology of Genocide and Atrocities. 2010. London: Sage.

"The Social Organization of Denial and Acknowledgement." 2008. *Actes de la Recherche en Science Sociales* 173:110-118.

"Law and Collective Memory," with Ryan D. King. 2007. *Annual Review of Law and Social Sciences* 3:189-211.

"Human Rights Violations, Law, and Collective Memory: Toward a Research Agenda." 2007. *Tempo Social* 19:13-37

"Institutionalizing Collective Memories of Hate: Law and Law Enforcement in Germany and the United States," with Ryan D. King. 2005. *American Journal of Sociology* 111:579-616. (Awards: Law and Society Association, 2006; ASA Section on Culture, 2007).

Rachel Schurman

Associate Professor
Ph.D. 1993 University of Wisconsin, Madison
Room 1078 Social Sciences
(612) 624-1039
schurman@umn.edu



INTEREST AREAS:

Sociology of Food and Agriculture, Social Movements, Political Sociology, International Political Economy, Environmental Sociology, Latin America.

CURRENT RESEARCH:

Prof. Schurman's most recent book, *Fighting for the Future of Food: Activists Vs. Agribusiness in the Struggle Over Biotechnology*, analyzes social resistance to agricultural biotechnology and how it has shaped the development and deployment of genetically modified organisms around the world. The book explores the significance of industry structures, and activist and industry lifeworlds for the contemporary struggle over biotechnology.

SELECTED PUBLICATIONS:

Schurman, Rachel and William A. Munro. 2010. *Fighting for the Future of Food: Activists Vs. Agribusiness in the Struggle Over Biotechnology*. Minneapolis, MN: University of Minnesota Press.

"Targeting Capital: A Cultural Economy Approach to Understanding the Efficacy of Two Anti-Genetic Engineering Movements," with William A. Munro. *American Journal of Sociology* 115(1):155–202.

"Chain (Re)actions: Comparing Activist Mobilization Against Biotechnology in Britain and the U.S.," with William A. Munro. 2009. Pp. 207-230 in *Frontiers in Commodity Chains Research*, edited by J. Bair. Palo Alto, CA: Stanford University Press.

"Local Activism and the 'Biotechnology Project'," with William A. Munro. 2008. Pp. 59-78 in *Reconstructing Biotechnologies: Critical Social Analysis*, edited by G. Ruivenkamp, S. Hisano, and J. Jongerden, Wageningen: Wageningen Academic Publishers.

"Sustaining Outrage: Motivating Sensibilities in the U.S. Anti-GE Movement," with William A. Munro. 2007. Pp. 145-176 in *The Fight Over Food: Producers, Consumers, and Activists Challenge the Global Food System*, edited by W. Wright and G. Middendorf. University Park, PA: Pennsylvania State University Press.

"Ideas, Thinkers, and Social Networks: The Process of Grievance Construction in the Anti-Genetic Engineering Movement," with William A. Munro. 2006. *Theory and Society* 35(1):1-38.

Teresa Toguchi Swartz

Associate Professor
Ph.D. 2001 University of California, San Diego
Room 933 Social Sciences
(612) 626-1862
tswartz@umn.edu



INTEREST AREAS:

Families; Race, Class and Gender; Asian American Studies; Foster Care and Welfare State; Transitions to Adulthood; and Carework.

CURRENT RESEARCH:

Growing Up But Not Apart: Young Adults' Relationships with Their Parents.

This study focuses on the changing transition to adulthood and what this has meant for intergenerational relationships among families from diverse racial, ethnic and social class backgrounds.

Segmented Assimilation in Cultural Cross Generational Perspective: The Incorporation Experience of Hmong Young Adults and their Parents (with Douglas Hartmann and Pao Lee). This project explores how young adult Hmong children of immigrants have understood and experienced their ethnic identities and cultural heritage over the course of growing up in St. Paul, Minnesota. Attention is focused on how ethnic identity formation is mediated through intergenerational family relationships, aspirations for social mobility, and experiences with racial discrimination.

SELECTED PUBLICATIONS:

"Intergenerational Family Relations in Adulthood: Patterns, Variations, and Implications in the Contemporary United States." 2009. *Annual Review of Sociology* 35:191-212.

"Welfare and Citizenship: The Effects of Governmental Assistance on Young Adults' Civic Participation." 2009. *The Sociological Quarterly* 50:633-665.

"Family Capital and the Invisible Transfer of Privilege: Intergenerational Support and Social Class in Early Adulthood." 2008. *New Directions for Child and Adolescent Development* 119:11-24.

"The New Adulthood? The Transition to Adulthood from the Perspective of Transitioning Young Adults" with Douglas Hartmann. 2007. Pp. 253-286 in *Advances in Life Course Research: 'Constructing Adulthood': Agency and Subjectivity in Adolescence and Adulthood*, Vol. 11, edited by R. Macmillan. Oxford: Elsevier/JAI Press.

Parenting for the State: An Ethnographic Analysis of Non-Profit Foster Care. 2005. New York: Routledge.

Chris Uggen

Distinguished McKnight Professor and Chair
Contexts, Co-editor
Ph.D. 1995 University of Wisconsin, Madison
Room 909 Social Sciences
(612) 624-4016
uggen001@umn.edu



INTEREST AREAS:

Crime, Law, and Deviance; Life Course; Inequality; Methods.

CURRENT RESEARCH:

The Effects of Criminal Records and Race on Employability. 2008-2010.
NIJ and JEHT Foundation.

Incarceration and Health, with Jason Schnittker. 2010-2013. R.W. Johnson
Foundation Investigator Award in Health Policy Research.

SELECTED PUBLICATIONS:

"Settling Down and Aging Out: Toward an Interactionist Theory of
Desistance and the Transition to Adulthood," with Michael Massoglia.
Forthcoming 2010. *American Journal of Sociology*.

"Public Criminologies," with Michelle Inderbitzin. Forthcoming 2010.
Criminology & Public Policy.

"Incarceration and Stratification," with Sara Wakefield. 2010. *Annual Review
of Sociology* 36:387-406.

"Sexual Harassment Comes of Age: A Comparative Analysis of the U.S. and
Japan," with Chika Shinohara. 2009. *The Sociological Quarterly* 50:201-34.

"Legal Consciousness and Responses to Sexual Harassment," with Amy
Blackstone and Heather McLaughlin. 2009. *Law & Society Review* 43:631-
68.

"Welfare and Citizenship: The Effects of Government Assistance on Voting
Behavior," with Teresa Swartz, Amy Blackstone, and Heather McLaughlin.
2009. *The Sociological Quarterly* 50:633-65.

Locked Out: Felon Disenfranchisement and American Democracy, with Jeff
Manza. 2006. New York: Oxford University Press. Paperback 2008.

"Citizenship, Democracy, and the Civic Reintegration of Criminal Offenders,"
with Jeff Manza and Melissa Thompson. 2006. *The Annals of the American
Academy of Political and Social Science* 605:281-310.

John Robert “Rob” Warren
Professor and Director of Undergraduate Studies
Ph.D. 1998 University of Wisconsin Madison
Room 1172 Social Sciences
(612) 624-2310
warre046@umn.edu



INTEREST AREAS:

Social Inequality; Education; Aging and the Life Course; Health Disparities.

CURRENT RESEARCH:

WORK AND FAMILY ACROSS THE LIFE COURSE (with Jim Raymo)
Using data from the Wisconsin Longitudinal Study, we are modeling the impact of work and family roles and conditions across the life course on health, well-being, financial security, and other outcomes in late adulthood.

PANEL CONDITIONING EFFECTS IN LONGITUDINAL STUDIES
How does participating in a long-term longitudinal study alter individuals' attitudes and behaviors—or at least their propensity to report those attitudes and behaviors accurately? To address this issue we are using data from the Current Population Survey, the German Socioeconomic Panel, and the U.S. General Social Survey.

SHOULD EVERYONE GO TO COLLEGE?

With Eric Grodsky and Stephanie DeLuca, I am considering the social and economic consequences of America's push to get all kids to college.

SELECTED PUBLICATIONS:

"Later-life Employment Preferences and Outcomes: The Role of Mid-life Work Experiences," with James M. Raymo, Megan M. Sweeney, Robert M. Hauser, and Jeong-Hwa Ho. 2010. *Research on Aging* 32:419-466.

"The Effect of Minimum Wage Rates on High School Completion," with Caitlin Hamrock. 2010. *Social Forces* 88:1379-1392.

"State Exit Exams Harm the Students Who Fail Them and Do Not Benefit the Students Who Pass Them. Now What?" with Eric S. Grodsky. 2009. *Phi Delta Kappan* 90:645-649.

"Socioeconomic Status and Health across the Life Course: A Test of the Social Causation and Health Selection Hypotheses." 2009. *Social Forces* 87:2125-2154.

"Measuring High School Graduation Rates at the State Level: What Difference Does Methodology Make?" with Andrew Halpern-Manners. 2009. *Sociological Methods and Research* 38:3-37.

Department of Sociology
University of Minnesota

909 Social Sciences Building
267 19th Avenue South
Minneapolis, MN 55455-0412
Telephone: (612) 624-4300
Fax: (612) 624-7020
Web: www.soc.umn.edu
E-mail: soc@umn.edu

Administrative Staff

Christopher Uggen
Douglas Hartmann
Ann Miller
Penny Edgell
Robert Fox
John Robert "Rob" Warren
Becky Mooney

Chair
Associate Chair
Assistant to the Chair
Director of Graduate Studies
Graduate Program Associate
Director of Undergraduate Studies
Coordinator of Undergraduate Advising